

Bedford Weir Plates & Scum Baffles

- VERSATILE
- STRONG
- EASY TO INSTALL
- EASY TO MAINTAIN

Available in any **SIZE**,
any **LENGTH** and
any **CONFIGURATION**

Benefits of **FRP**

- Corrosion Resistant
- Maintenance Free
- Strong
- Easy to Install
- Lightweight





Weir Plates & Scum Baffles

Material

Weir, Baffles and other related products from Bedford Reinforced Plastics are produced from the pultrusion method using Polyester Resin with fiberglass reinforcement and machined by CNC.

Configurations

We offer a variety of weir configurations including V-notched, effluent, rectangular, and sharp-crested weirs, made to your specifications. Weir Joint and Weir Washers can be supplied with your Weirs. Weir and Baffle Plates are 1/4" thick, ranging in widths for 6" to 48" and lengths up to 20'. The standard color is olive green. Other thicknesses and colors are available.

Benefits

- Long service life
- Virtually maintenance free
- High corrosion resistance

Accessories Available

- Baffle Joint (Splice) Plates
- Weir Joint (Splice) Plates
- Molded and Pultruded Baffle Brackets
- Washers



Bedford Reinforced Plastics also manufactures and stocks a full-line of **Standard Structural FRP** components such as angle, channel, I-beam, square and round tube, and flat sheet.

For more Information, contact:

Bedford Reinforced Plastics, Inc.

264 Reynoldsdale Road
Bedford, PA 15522-7401 USA

Phone: (814) 623-8125

Fax: (814) 623-6023

www.bedfordplastics.com

frpsales@bedfordplastics.com



264 Reynoldsdale Road
Bedford, Pennsylvania 15522

Telephone (814) 623-8125
FAX (814) 623-6032

Web Site www.bedfordplastics.com
email frpsales@bedfordplastics.com

FRP WEIR AND BAFFLE SPECIFICATIONS

General

All required weir plate, scum baffle, joint plate, and washers shall be manufactured by the pultrusion process and machined by CNC to ensure continuous quality.

All material shall be produced with resin rich surface, free of voids and porosity. All edges shall be sealed with a compatible resin.

The laminate shall be isophthalic polyester or vinyl ester resin reinforced with a minimum of 45% (by weight) unidirectional fiberglass roving and continuous strand fiberglass mat. A synthetic veil and UV inhibitors shall be used to enhance the surface and aid in the resistance to ultraviolet degradation. The color shall be olive green through out.

Weirs, baffles, joint plates, and washers produced from sprayup, handlayup, and compression molding will not be acceptable.

Weirs

Weir plates shall be ¼" thick x ()" high with 90° v notches ()" deep on ()" centers and ()" long.

Each weir plate shall be provided from the manufacturer with oversized mounting holes to allow a minimum of 2" of vertical or horizontal adjustment.

The weirs shall be mounted with ½" hardware and 5" diameter FRP weir washers.

The ends shall be joined with 6" wide FRP joint plates to allow for horizontal expansion.

Scum Baffles

Scum baffles shall be ¼" thick x ()" high and ()" long.

The scum baffle shall be provided from the manufacturer with mounting holes as required to attach to FRP support brackets.

The bracket shall provide horizontal, vertical, and radial adjustment of the scum baffle.

The ends of the scum baffle shall be joined by a 6" wide FRP joint plate.



Bedford Reinforced Plastics, Inc.

264 Reynoldsdale Road
Bedford, Pennsylvania 15522

Telephone (814) 623-8125
FAX (814) 623-6032

Web Site www.bedfordplastics.com
email frpsales@bedfordplastics.com

FRP WEIR AND BAFFLE SPECIFICATIONS

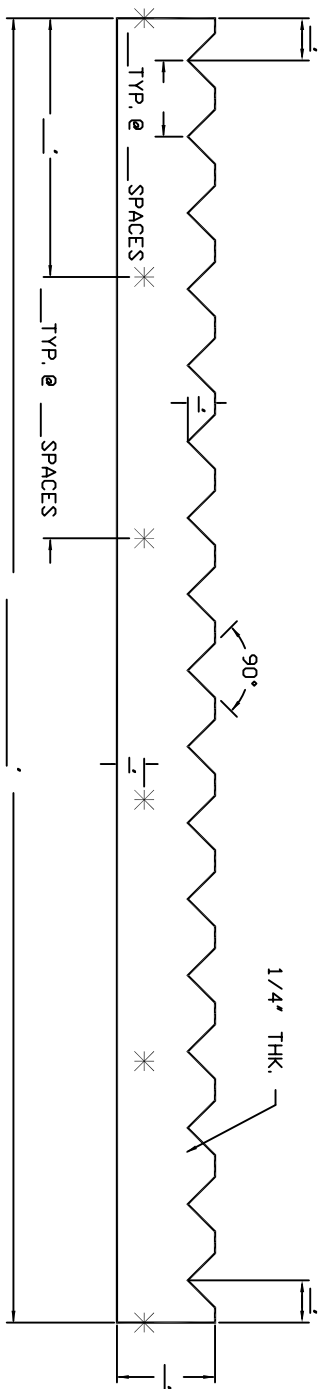
Physical Properties

Weir plate, scum baffle, joint plate, and weir washers shall have the following minimum physical properties.

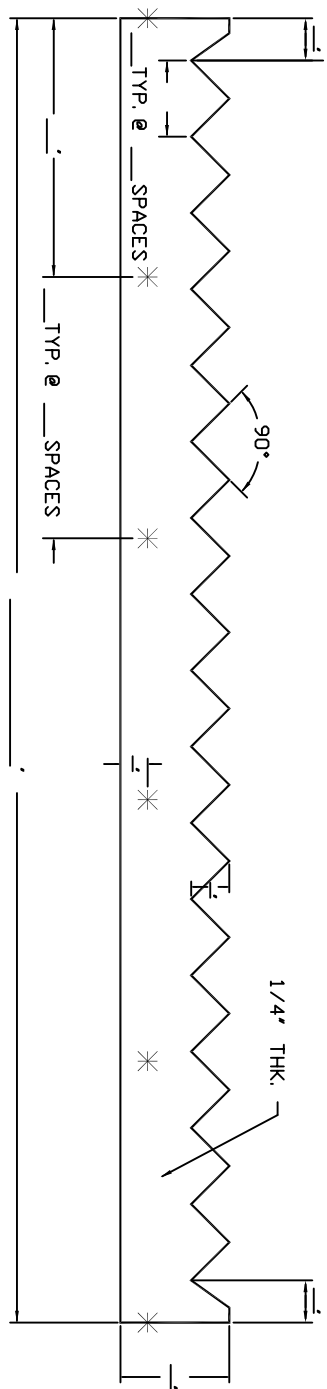
| | | | |
|---|----|--------------------------------|-------------|
| Tensile Strength | LW | 24,000 ^{psi} | ASTM D-638 |
| | CW | 10,000 ^{psi} | |
| Flexural Strength | LW | 35,000 ^{psi} | ASTM D-790 |
| | CW | 15,000 ^{psi} | |
| Flexural Modulus | LW | 2.0 x 10 ⁶ psi | ASTM D-790 |
| | CW | 1.1 x 10 ⁶ psi | |
| Notched Izod Impact | LW | 20 ft-lb/in. | ASTM D-256 |
| | CW | 5 ft-lb/in. | |
| Barcol Hardness | | 40 | ASTM D-2583 |
| Water Absorption | | <1% max | ASTM D-570 |
| Coefficient of Linear Thermal Expansion | | 10 x 10 ⁻⁶ in/in/°C | ASTM D-696 |

The Manufacturer shall maintain a continuous Quality Control Program and shall furnish upon request Certified Test Reports to assure the properties of the Physical Tests listed above.

Weir Plates, Scum Baffles, Joint Plates, Weir Washers and Scum Baffle Support Brackets, shall be manufactured by Bedford Reinforced Plastics, Inc., 264 Reynoldsdale Road, Bedford PA 15522.

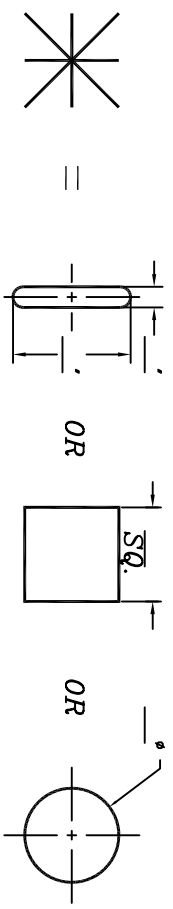



FRP NON-CONTINUOUS V-NOTCHED WEIR
 QTY. REQ'D _____
 COLOR: OLIVE GREEN

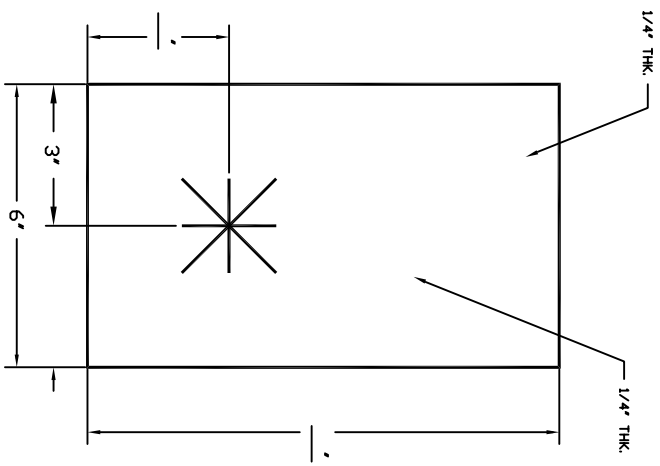


FRP CONTINUOUS V-NOTCHED WEIR
 QTY. REQ'D _____
 COLOR: OLIVE GREEN

KEY:

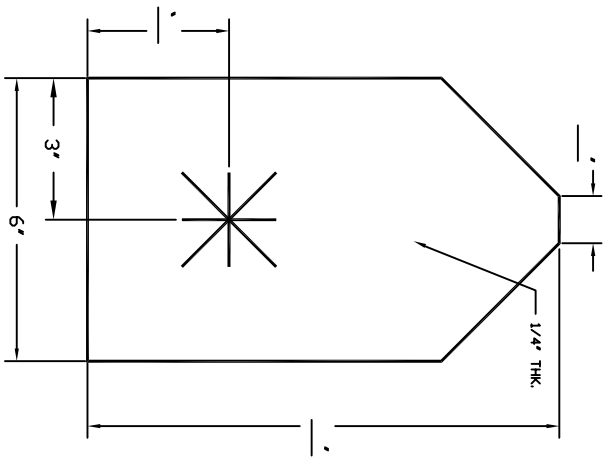


| | | | |
|--|----------------|------------------------------|--------------|
|  BEDFORD REINFORCED PLASTICS, INC. | | PROD./DWG. TITLE: FRP WEIRS | |
| DRAWN BY: LJB | DATE: 12/22/99 | SCALE: N/A | APP'D: _____ |
| REVISIONS | | TOLERANCES (except as noted) | DATE: _____ |
| NO. _____ | DATE _____ | DESCRIPTION _____ | SHEET: _____ |
| ± | | DRAWING NO. _____ | _____ |



FRP WEIR SPLICE A

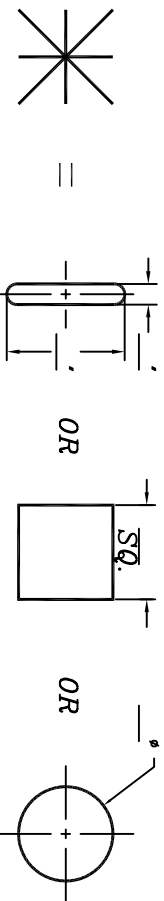
QTY. REQ'D _____
 COLOR: OLIVE GREEN




FRP WEIR SPLICE B

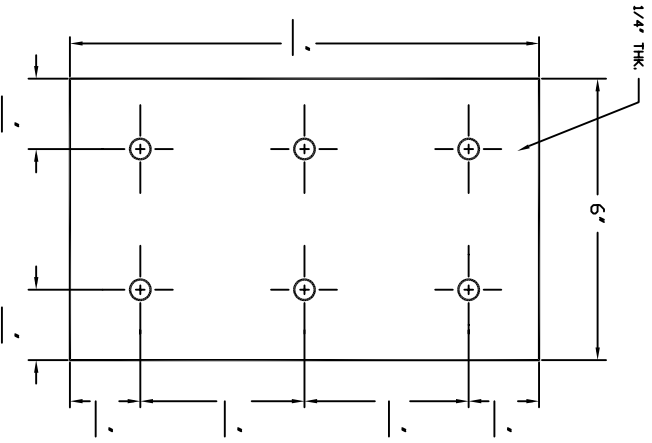
QTY. REQ'D _____
 COLOR: OLIVE GREEN

KEY:



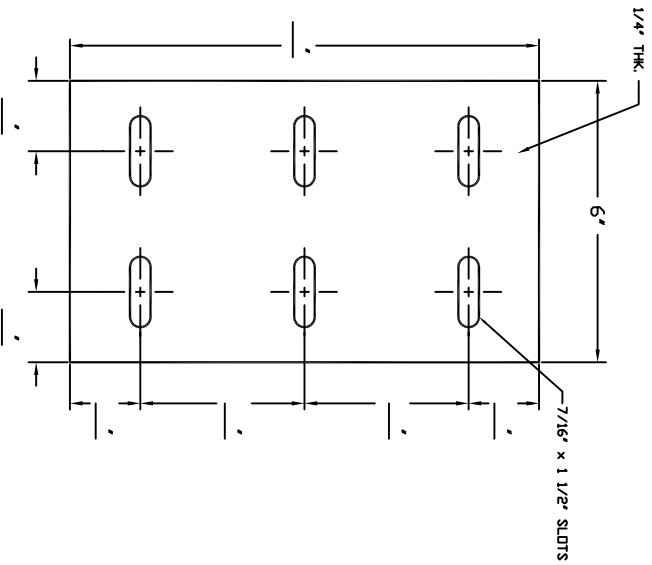
| | |
|--|------------------------------|
|  BEDFORD REINFORCED PLASTICS, INC. | |
| PROJ./DWG. TITLE: | FRP WEIR SPLICE PLATES |
| DRAWN BY: | DATE: 12/22/99 |
| SCALE: | N/A |
| APPROVED: | DATE: |
| REVISIONS | TOLERANCES (unless as noted) |
| NO. | DESCRIPTION |
| DATE | ± |
| DRAWING NO. | |

CHECK BOX IF HOLES ARE
COUNTER SUNK.



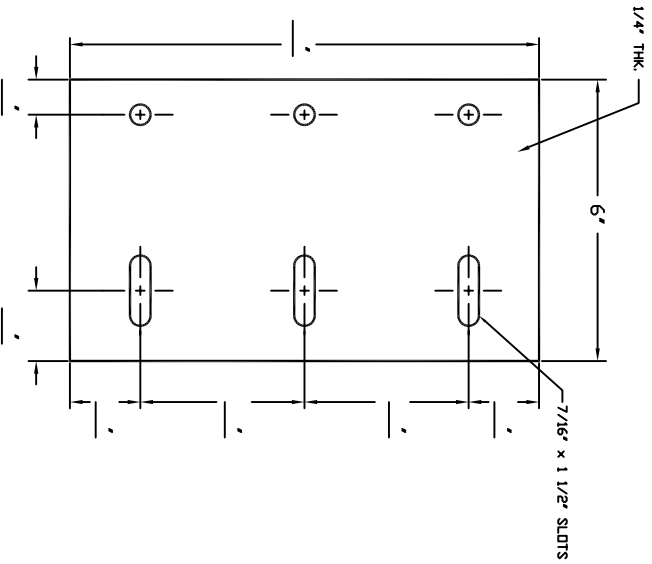
FRP BRACKET A
QTY. REQ'D _____
COLOR: OLIVE GREEN

CHECK BOX IF HOLES ARE
COUNTER SUNK.




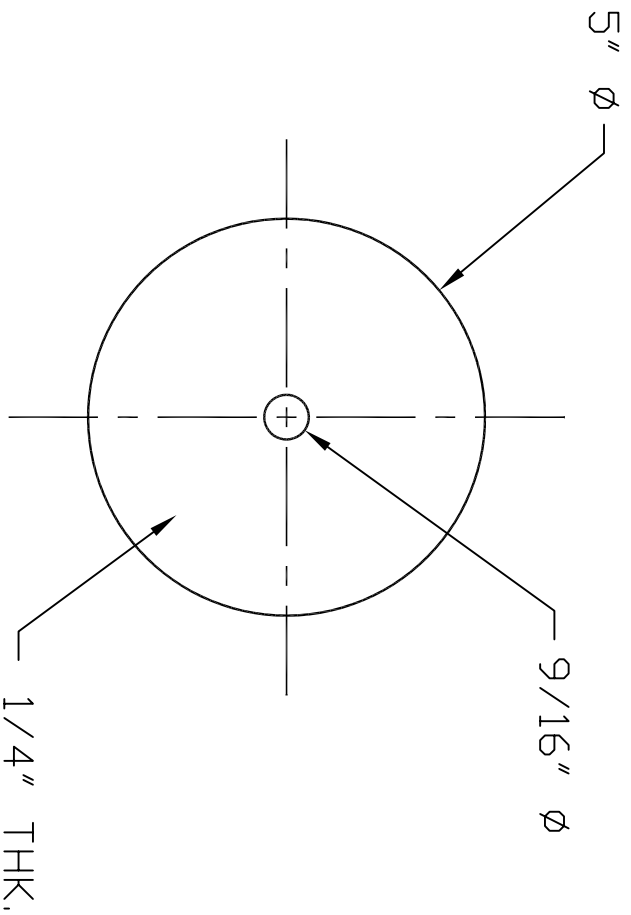
FRP BRACKET B
QTY. REQ'D _____
COLOR: OLIVE GREEN

CHECK BOX IF HOLES ARE
COUNTER SUNK.



FRP BRACKET C
QTY. REQ'D _____
COLOR: OLIVE GREEN


| | | | |
|--|----------|---------------------------|-------------|
|  BEDFORD REINFORCED PLASTICS, INC. | | FRP BAFFLE SPLICES | |
| PROD./DWG. TITLE DRAWN BY: | DATE: | SCALE: | APP'D: |
| REVISIONS NO. DATE DESCRIPTION | 12/22/99 | N/A | DATE: |
| TOLERANCES (unless otherwise noted) | ± | SHEET: | DRAWING NO. |

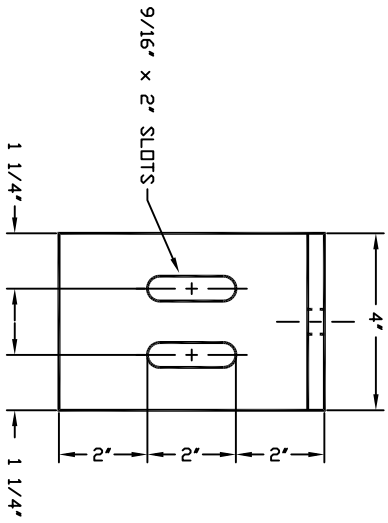
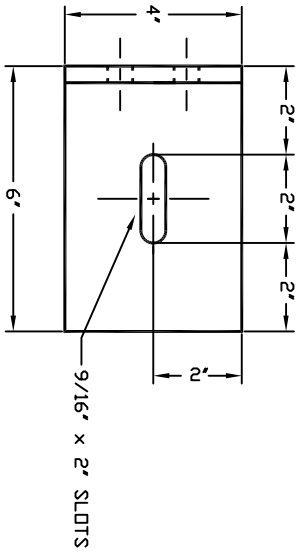


COLOR:
OLIVE GREEN

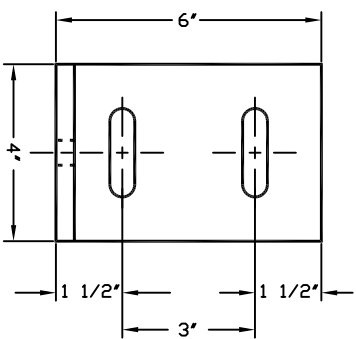
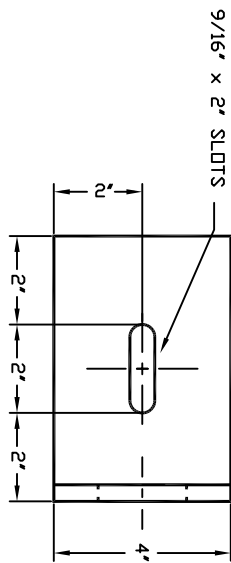
FRP WEIR WASHERS

QTY. REQ'D _____


| | |
|--|----------------|
|  BEDFORD REINFORCED PLASTICS, INC. | |
| PROD./DWG. TITLE: FRP 5" WEIR WASHER | |
| DRAWN BY: | DATE: 12/22/99 |
| REVISIONS | |
| NO. | DATE |
| DESCRIPTION | |
| SCALE: N/A | APP'D: |
| TOLERANCES (unless otherwise noted) ± | DATE: |
| SHEET: | DRAWING NO.: |



FRP BRACKET 1
 6" x 3/8" ANG.
 QTY. REQ'D _____
 COLOR: OLIVE GREEN

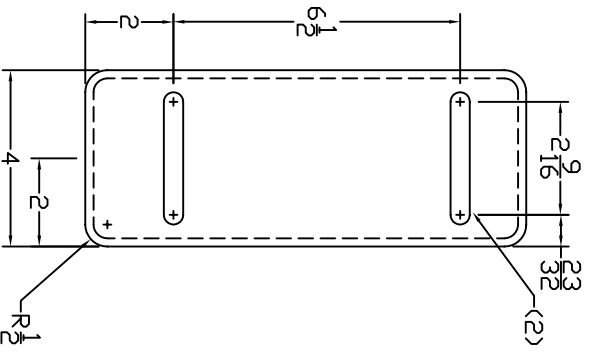
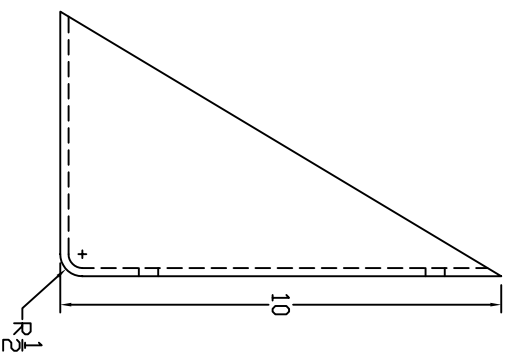


FRP BRACKET 2
 6" x 3/8" ANG.
 QTY. REQ'D _____
 COLOR: OLIVE GREEN

| | |
|--|------------------------------|
|  BEDFORD REINFORCED PLASTICS, INC. | |
| PROJ./DWG. TITLE: | FRP BRACKETS TYP 1 |
| DRAWN BY: | DATE: |
| 12/22/99 | SCALE: |
| N/A | APP'D: |
| DATE: | DATE: |
| REVISIONS | SHEET: |
| NO. DATE DESCRIPTION | TOLERANCES (unless as noted) |
| ± | DRAWING NO. |

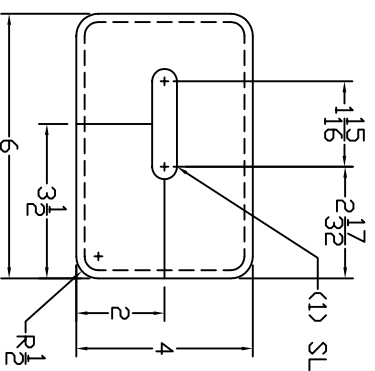
TOP BRACKET

DRAWING REVISED
2/28/2006 S.P.




(1) SLOT 9/16" W X 2-1/2" LG

(2) SLOTS 7/16" X 3" LG

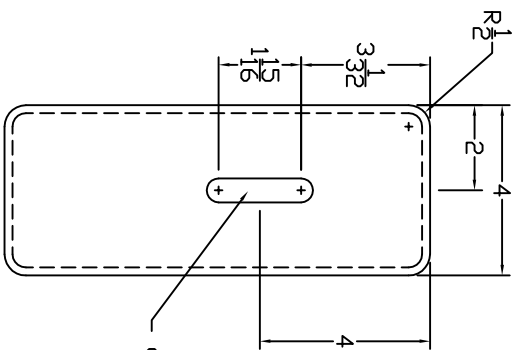
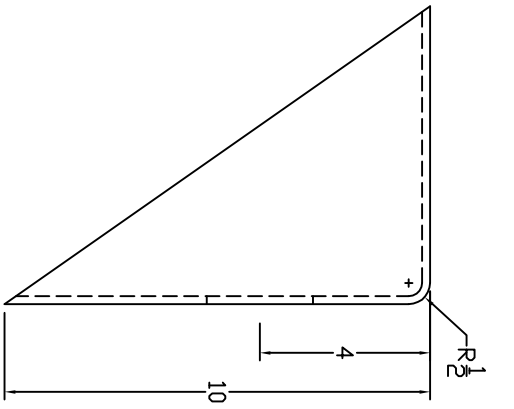


COLOR OLIVE GREEN
QUANTITY REQUIRED ---

| | | | |
|--|------------------------------|-------------|-------------|
|  BEDFORD REINFORCED PLASTICS, INC. | | | |
| PROJ./DWG. TITLE: | BAFFLE BRACKET TOP | | |
| DRAWN BY: | S. P. | | |
| DATE: | 4/3/2006 | | |
| SCALE: | NONE | | |
| APPROVED: | DATE: 4/3/2006 | | |
| REVISIONS | TOLERANCES (unless as noted) | | |
| NO. | DATE | DESCRIPTION | SHEET: |
| | | | DRAWING NO. |
| | | | ± |

BOTTOM BRACKET

DRAWING REVISED
9/11/2007

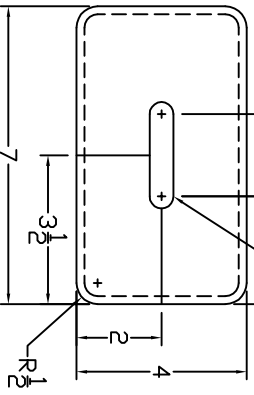



(1) SLOT 9/16"W X 2-1/2' LG

(1) SLOT 9/16"W X 2-1/2' LG

COLOR= OLIVE GREEN

QUANTITY REQUIRED ----



| | | | |
|--|-----------|------------------------------|--|
|  BEDFORD REINFORCED PLASTICS, INC. | | BAFFLE BRACKET BOTTOM | |
| PROD./DWG. TITLE: | DATE: | SCALE: | APP'D: |
| DRAWN BY: | 9/11/2007 | NONE | DATE: 9/11/2007 |
| S. P. | | REVISIONS | |
| NO. | DATE | DESCRIPTION | TOLERANCES (UNLESS OTHERWISE NOTED) |
| ± | ± | ± | DRAWING NO. |